
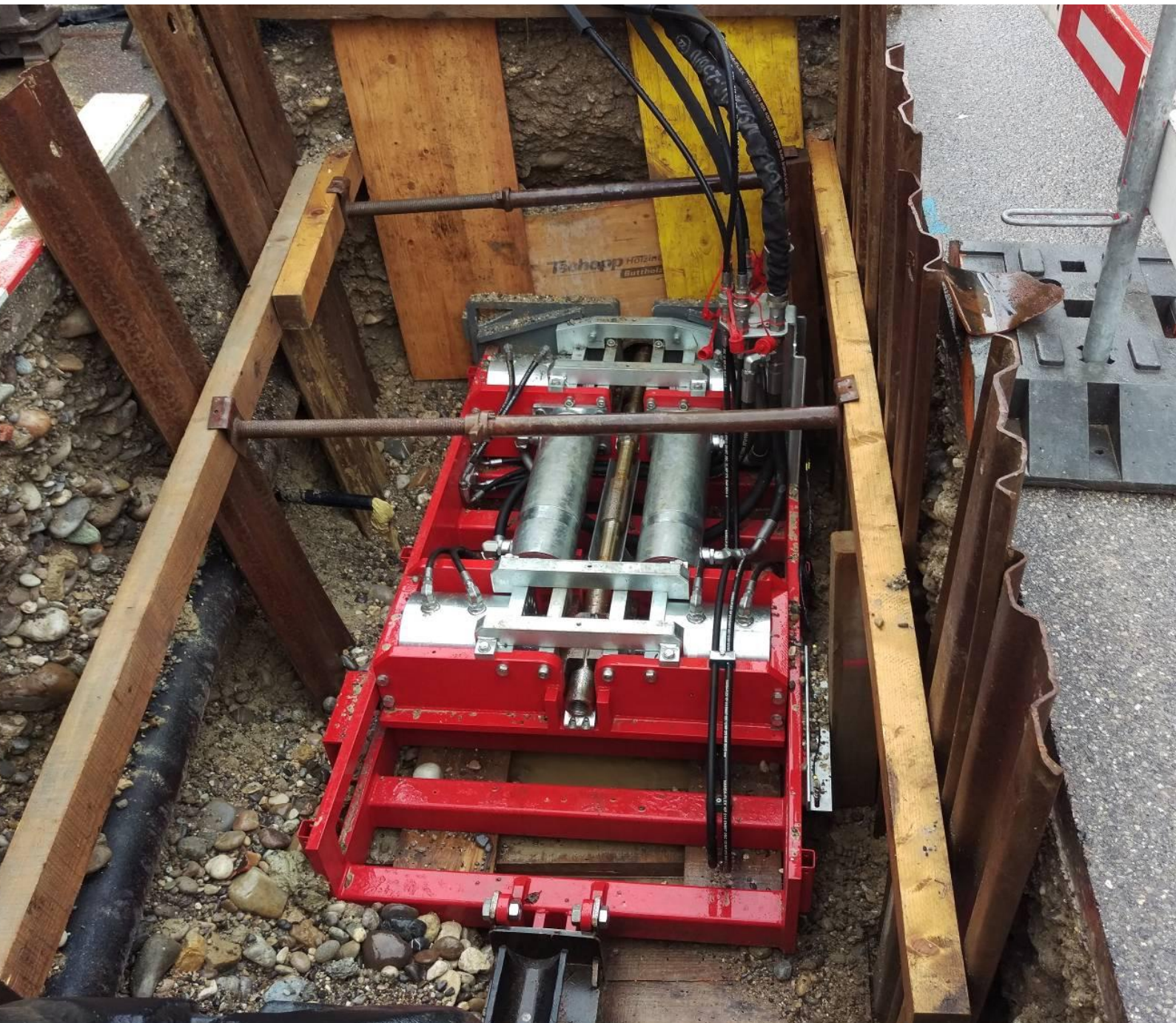


100 tonnes Rod Burster X 1000 cuts  
ductile Cast Iron

Swiss made 





# TERRA-EXTRACTOR X 1000

Replacement of old ductile Cast Iron pipe

---

## Job site report

In the Swiss City Oberdorf nearby Solothurn several hundred meters of fresh water lines had to be renewed. The contractor Rudolf Frutig is specialized for bursting and swage lining, he became responsible for this trenchless job side.

Totally four sections in lengths of 92 m, 64 m, 30 m and 35 m (300 ft, 210 ft, 100 ft and 115 ft) had to be renewed. The first section was an old ductile cast iron pipe DN 150 mm (6"), being replaced by a new HDPE pipe OD 180 mm (7"). The other sections consisted of ductile cast iron DN 125 mm (5").

The new pipes had been HDPE pipes OD 160 mm (6.3").

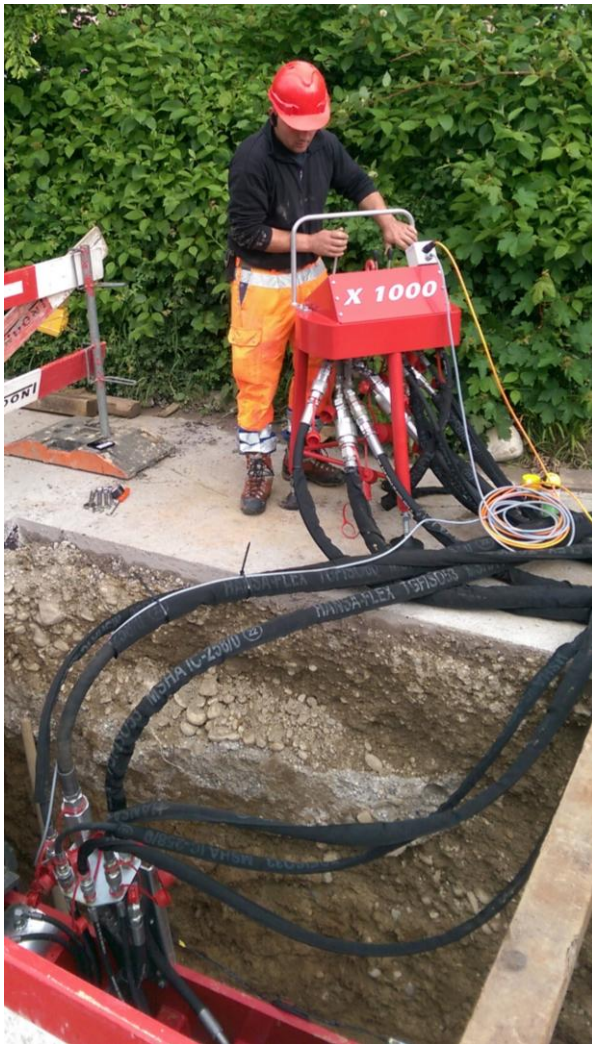
## TERRA-EXTRACTOR X 1000 – also available as a cable burster

For replacement of old pipes 5" – 20" (Ø 125 - 500 mm) from cast iron, steel, clay ware or PE/PVC. New HDPE pipes Ø 125 – 500 mm (5" – 20") are pulled in. Both cable and rods are available for this machine. Lengths up to 120 m (400 ft). Maximum pulling force: 1000 kN (100 tons / 220'000 lbs / 110 US tons).



Pic 1: Assembly of the next rod by a crane with magnetic connection.





Pic.2: The control panel stands outside of the machine pit on top of the road. During operation no operator is in the machine pit.

Pic.3: Transport of the rod burster X 1000



Pic. 4 + 5: The old pipe is cut below the roller cutter. The expander cone and the new HDPE pipe are assembled behind the roller cutter.



## Expanding and pulling procedure

100 tonnes of pulling force



Pic. 6: The new pipe is pulled into the old cut pipe.



Pic. 7: A T-fitting is cut by the roller cutter.



Pic. 8: In this intermedium pit the T-fitting has been cut off. The plate prevents the old pipe sliding into the other end of the old pipe.



Pic. 9: The expander cone and the new HDPE pipe are pulled through an intermedium pit.

TERRA AG  
für Tiefbautechnik  
Hauptstrasse 92  
6260 Reiden  
Schweiz

Tel. + 41 62 749 10 10  
Fax. + 41 62 749 10 11  
office@terra-eu.eu

Your dealer:

[www.terra-eu.eu](http://www.terra-eu.eu)  
[www.boeshop.com](http://www.boeshop.com)