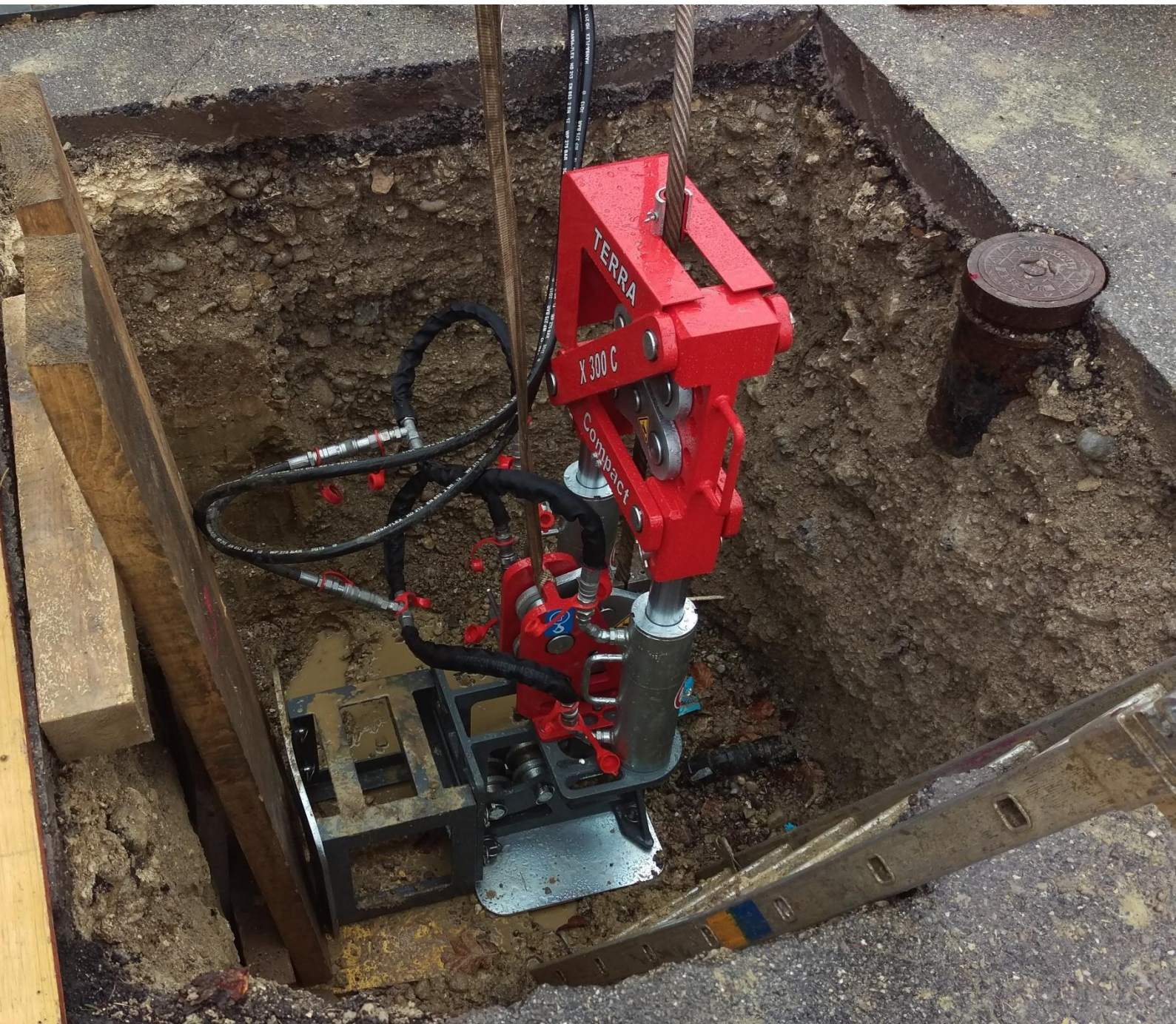


House connection renewed with cable burster X 300 C

Swiss made



TERRA-EXTRACTOR X 300 C

House connection renewed

Job site report

A house connection for fresh water had to be renewed in the Swiss village Balsthal by pipe bursting. The contractor Eggenschwiler from Balsthal used the cable burster TERRA-EXTRACTOR X 300 C successful for this pipe laying project. The old pipe from cast iron with an inner diameter of 40 mm (1.5") was replaced by a PE protection pipe with OD 72 mm (2.8"). The old pipe had a leakage 10 years ago, which had been repaired by a repair collar from ductile cast iron. The old pipe was burst with a static 3-wing cutter. This cutter pushed the repair collar out of the ground. This bursting project could be finished within half a working day.

TERRA-EXTRACTOR X 300 C

The TERRA-EXTRACTOR X 300 C is an innovative cable burster for replacement of old pipes made from cast iron, steel, clay ware or PE/PVC. With this machine you can burst old pipes with \varnothing 34 - 220 mm (1.5" – 8.5") and pull in new HDPE pipes with \varnothing 63 – 180 mm (2.5" – 7") in lengths up to 120 m (400 ft). With a maximum pulling force of 300 kN (30 tonnes / 66'000 lb/33 US tons) it is a strong but compact machine.

The Cable Burster X 300 C can operate on smallest areas of L x W = 0.42 m x 0.60 m (16.5" x 22.6").

The X 300 C can be installed in manholes of \varnothing 800 mm (32") and dismounted it can be lifted through manhole entries of \varnothing 620 mm (25").

Special cables \varnothing 22 mm (0.9") and \varnothing 14 mm (0.6") allow the replacement of smallest pipes.



Pic. 1: The pulling cable is pushed through the old pipe. The cable burster is lifted into the pit.



Pic. 2: The 3-wing cutter, the cable coupling and the expander cone are assembled in the bursting

Pipe pulling and expanding procedure

PE protection pipe OD 72 mm



Pic. 3: The PE protection pipe OD 72 mm (2.8") is assembled behind the expander cone in the burst pit.



Pic. 4: The cable burster in the pit after the finished pipe bursting procedure.



Pic. 5: The protection pipe reaches the machine pit.



Pic. 6: The protection pipe is pulled into the machine pit. Then the product pipe is pushed into the protection pipe.

Repair collar

Cable burster X 300 C

Pic. 7: The repair collar from ductile cast iron could not be cut. It was pushed of the ground.



TERRA-Baustellenbericht bau_239 (en), Copyright © TERRA AG

TERRA AG
für Tiefbautechnik
Hauptstrasse 92
6260 Reiden
Switzerland

Tel. + 41 62 749 10 10
Fax. + 41 62 749 10 11
office@terra-eu.eu

Your dealer:

www.terra-eu.eu
www.boeshop.com