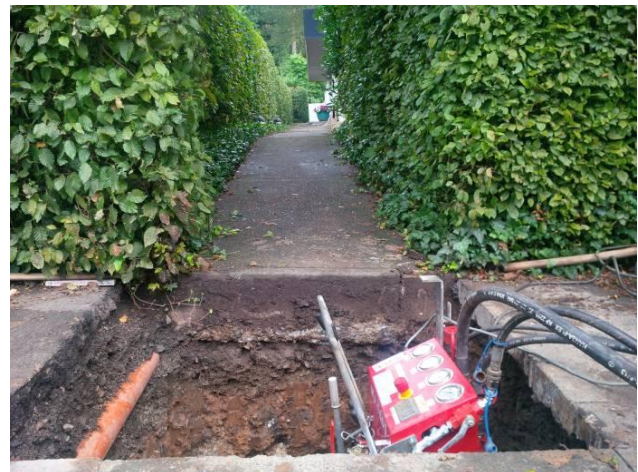


TERRA MINI-JET drills right on target

Two new house connections for electrical power and gas had been laid in Siegen, Germany by horizontal directional drilling (HDD) within a few hours. The contractor Thomaschewski GmbH from Buseck decided to lay the new pipes underground with the TERRA MINI-JET MJ 1600, because earlier trials with underground piercing tools failed due to the ground conditions. A pipe bundle of two HDPE pipes OD 63 mm (2.5") had been pulled in. The pilot bore had to be drilled very carefully and precisely, because of existing pipes in the ground.



View along the drill path. The pilot bore was guided around rocky areas.



The components of the pit drill are positioned besides the starting pit.



The drill head arrives in the pit „right on taret“. The 3-fingerhead was chosen due to the hard ground conditions.



View from the top into the target pit. The existing clayware pipes required a very precise pilot bore.



The pipe bundle just before backreaming.



The 2x HDPE pipes OD 63 mm (2.5“) after pipe pulling.