

Top Speed during PE pipe renewal

The Authorities of the German city Ulm SWU Netze GmbH renewed a 27 m (90 ft) long PE fresh water line trenchless with the Cable Burster TERRA-EXTRACTOR X 100. The residence enjoyed the quick carrying out of this pipe renewal project.



In the German City Ulm/Neu-Ulm the house connections of the fresh water lines are checked by the SWU Netze GmbH. Leaking house connections will be renewed. The SWU Netze GmbH replaced such a leaking house connection for the first time trenchless with the Cable Burster X 100.

One of these house connections was 27 m (90 ft) long. The leaking old pipe from PE with OD 50 mm (2") had to be replaced by a new HDPE pipe with the same dimensions. At 8.00 o'clock in the morning the water supply to the apartment building was switched off. At the same time the TERRA-EXTRACTOR X 100 was prepared at the opposite side of the road.

The pipe renewal began after the installation of the Cable Burster had been finished. The old PE pipe was cut into two halves with a special cutting technology. PE has a very low ground friction. This causes that the old PE pipe is pushed through the bore channel to the Cable Burster X 100 during cutting of the old pipe.

Therefore a swell cone is assembled in the TERRA-EXTRACTOR X 100. This swell cone cuts the pressed-out old pipe in the frame of the X 100 into two halves.



←
This old fresh water line underneath the road to building no. 55-57 had to be renewed.



→
The old water connection in the cellar.

**Cable Burster
TERRA-EXTRACTOR X 100**



←
The TERRA-EXTRACTOR X 100 is lifted into the working pit.



→
The Cable Burster X 100 is connected to the hydraulics of a mini excavator.



←
The PE cutting tools are assembled.

→
The cutting operation starts.





←
The cutting of the old PE pipes
has just began.



→
The old pipe is cut into two halves
and the new (blue) pipe is pulled in.



←
The old pipe is pressed out of the
bore channel and cut by the swell cone.



→
The new pipe reaches the
Cable Burster X 100.

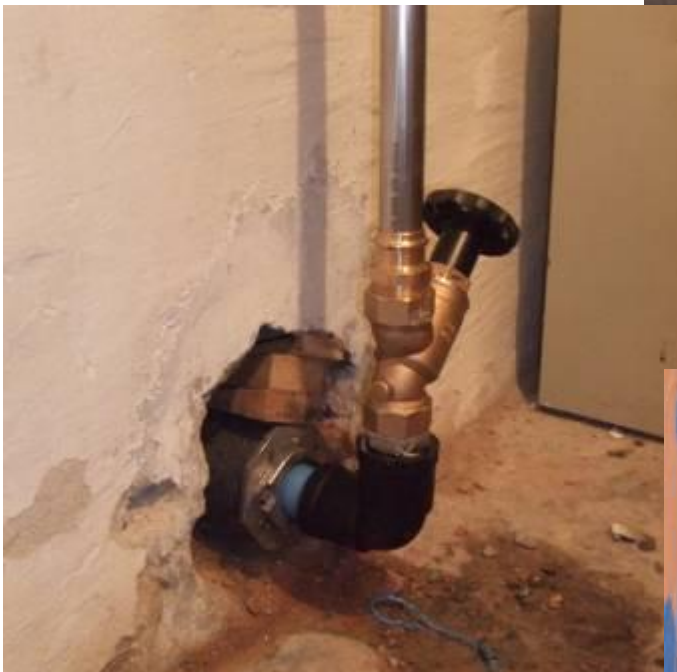
**Cable Burster
TERRA-EXTRACTOR X 100**



The new pipe has been pulled in.



The special seal for the wall breakthrough.



The new water connection in the building



The new pipe is connected to the main water line.

